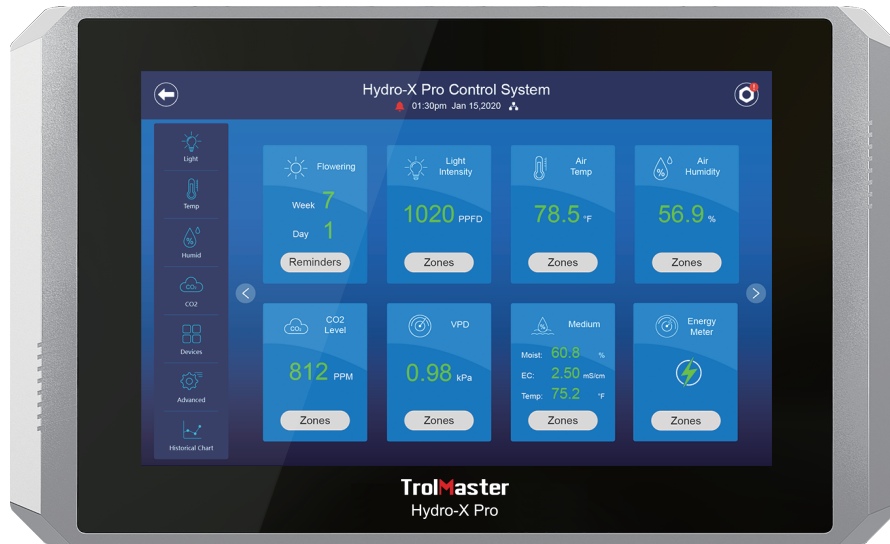


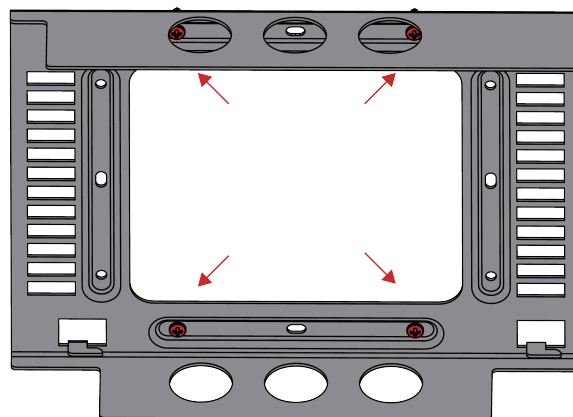
Hydro-X Pro (HCS-2) User Manual



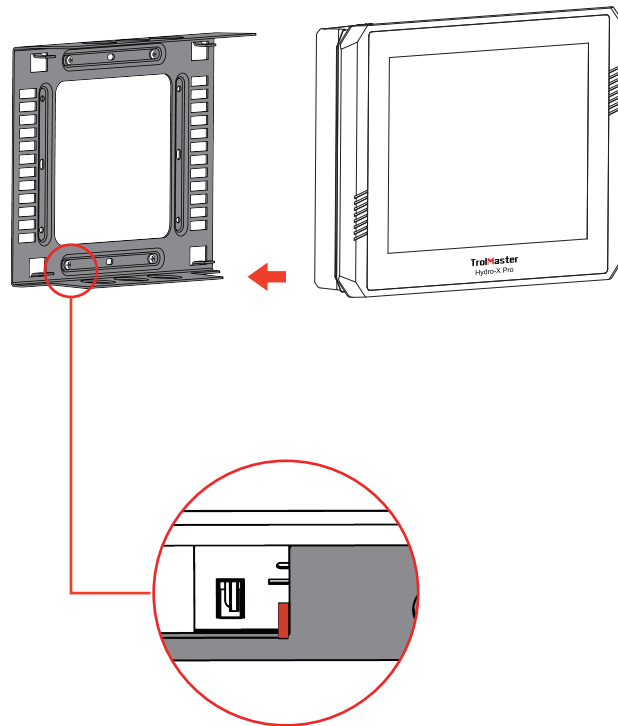
HCS-2 for Hydro-X Pro Control System

QUICK INSTRUCTION

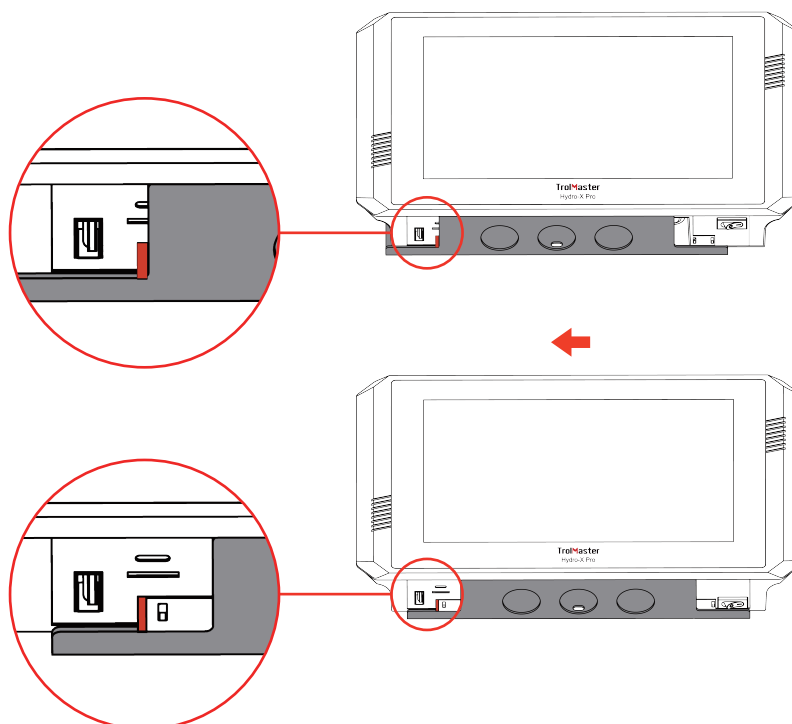
1. Secure the mounting plate to the wall using 4 screws.



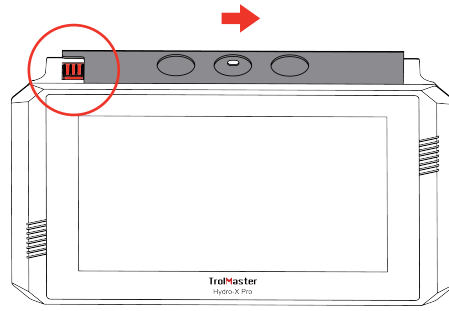
2. Place the controller onto the mounting plate capture hooks.



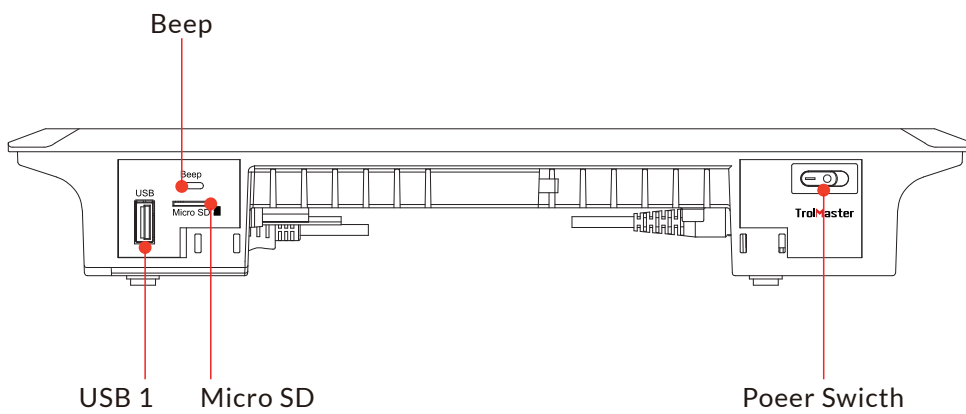
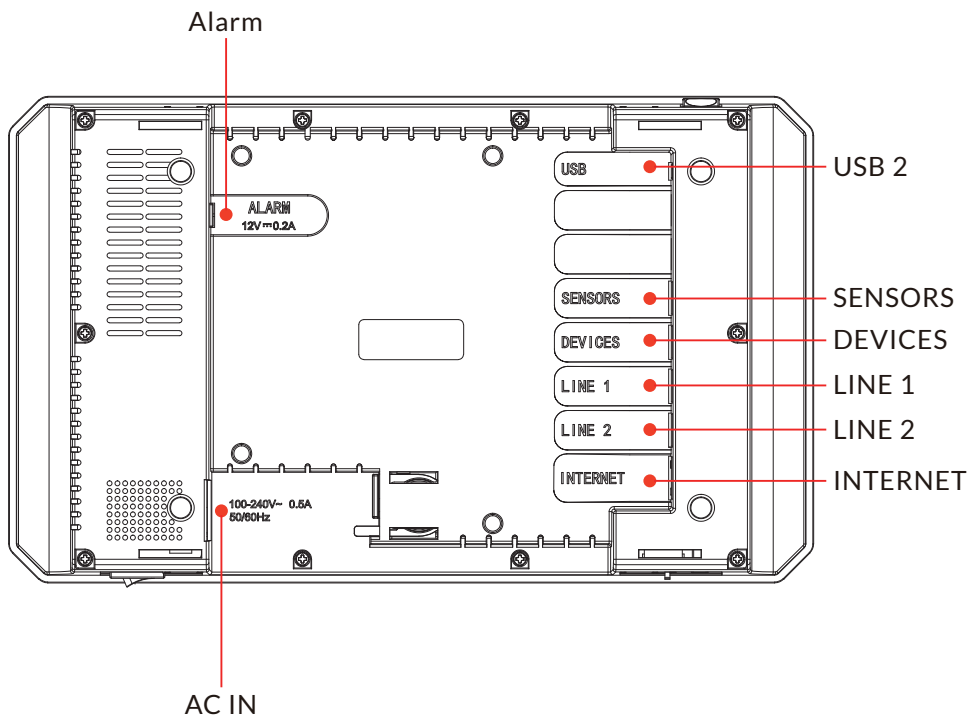
3. Slide the controller from right to left until it "locks" into place.



4. To release the controller, press on the lock and slide the controller to the right.



5. Connect power cord, sensors, device stations and internet cable to each ports accordingly.



6. Scan the QR code below to view the online tutorial video.



GENERAL INFORMATION

WARRANTY

TrolMaster only uses high quality components. Under normal operating conditions, the mechanical and electronic components are covered by a three-year warranty from the original date of purchase. For service, return the HCS-2 Hydro-X Pro Environment Control System. System in the original packaging to your shop with the original sales receipt.

Components that are excluded from warranty are components that have failed due to abnormal usage.

In the case of defects of the HCS-2 Hydro-X Pro Environment Control System, the controller will either be replaced or repaired using new or reconditioned products or parts. If the Controller will be replaced this limited warranty shall apply to the replacement product for the remaining initial warranty period, i.e. (three) 3 years from the date of purchase of the original product.

RETURNS

All returns need to be done in the original packaging in order to avoid damages of the product during transport. Defective products need to be returned to factory or service shop for repair. Non-professionals DO NOT open the cabinet to prevent electric shock or damage to the equipment.

RETOURS

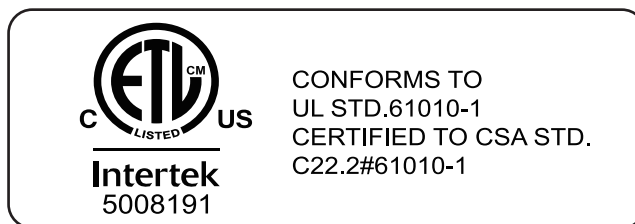
Pour tout retour, le produit doit être replacé dans son emballage d'origine afin d'éviter qu'il soit endommagé pendant le transport. Les produits défectueux doivent être renvoyés à l'usine ou à l'atelier d'entretien pour réparation. Avis aux non professionnels: n'ouvrez pas l'armoire afin d'éviter tout risque de choc électrique ou de dommages matériels.

REGISTRATION

TrolMaster Agro Instruments Co., Ltd. will occasionally release updated firmware for the HCS-2 Hydro-X Pro Environment Control System.

By registering your HCS-2 Hydro-X Pro Environment Control System on our website www.trolmaster.com we can notify you when an update is available.

We will not sell, rent or share your personal information.



WARNING: DO NOT allow the HCS-2 Hydro-X Pro Environment Control System to be exposed to water or excessive heat. DO NOT open or attempt to repair or disassemble the controller, as there are no user-serviceable parts inside. Opening the controller will void the warranty.

If the surface of HCS-2 Hydro-X Pro Environment Control System is dirty, wipe it with a dry towel. The HCS-2 Hydro-X Pro Environment Control System operates under natural ventilation conditions.

Where the mains plug or an appliance coupler is used as the disconnect device, the disconnect device shall remain readily operable.

AVERTISSEMENT: NE LAISSEZ PAS le système de contrôle de l'environnement HCS-2 Hydro-X Pro exposé à l'eau ou à une chaleur excessive. NE PAS ouvrir ni tenter de réparer ou de démonter le contrôleur, car il ne contient aucune pièce réparable par l'utilisateur. L'ouverture du contrôleur annulera la garantie.

Si la surface du système de contrôle de l'environnement HCS-2 Hydro-X Pro est sale, essuyez-la avec une serviette sèche. Le système de contrôle de l'environnement HCS-2 Hydro-X Pro fonctionne dans des conditions de ventilation naturelle.

Cuando se usa el enchufe del suministro eléctrico o el acoplador de un artefacto como dispositivo de desconexión, el mismo debe permanecer listo a operar.

SPECIFICATIONS

Input Voltage Tension D'entrée	100-240V~, 50/60Hz, 0.5A 100-240V~, 50/60Hz, 0.5A
Certifications Certifications	ETL / FCC ETL / FCC
Degree of Ingress Protection Indice de protection	IP20 IP20
Max Number of HID Fixtures	256*2
Max Distance to Device to be connected	1000 meters
All-in-1 Pro Sensor(MBS-PRO) Full Spectrum Quantum Sensor(MBS-PAR) Water Content Sensor(WCS-1)	Maximum 50 sensors in combination
Device Stations	Maximum 50 devices in combination
Light Intensity Range	0-2000PPFD
Moist Range	0-100%
Temperature Range	32-138.2°F
Temperature Accuracy	±0.36°F
Temperature Deadband	3°F (1°F~15°F)
Humidity Range	5.95%
Humidity Accuracy	± 5%
Humidity Deadband	3% (1%~15%)
CO2 Range	0-2500 PPM
CO2 Accuracy	±(5%+30) PPM
CO2 Deadband	50ppm (10ppm~250ppm)
Working Environments	Temperature 31-104°F Humidity ≤ 90%

ENVIRONMENTAL AND DISPOSAL CONCERNS:

THIS PRODUCT CONTAINS A BATTERY AND OTHER COMPONENTS WHICH MUST BE DISPOSED OF PROPERLY.



This symbol displayed on a product, its accessories, or its packaging indicates that this product may not be discarded as household waste. Dispose of the equipment through a recycling center that handles electronics and electrical appliances. By disposing of the equipment in the proper and lawful way you will be helping to prevent possible damage to the environment and risk to public health.

For any issues or concerns with our products, DO NOT return them to the store. Please contact our tech support department at support@trolmaster.com or call **877-420-9876**.

September 2024 ©2024 TrolMaster™ All rights reserved.